

CCELL®

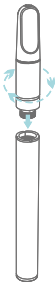
M3

USER MANUAL

M3

USER'S GUIDE

1 Step 1



2 Ready to Use (Inhale Activated)

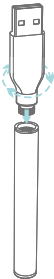


Cartridges need to be purchased separately.

M3

USER'S GUIDE

1 Step 1



2 Recharge



Recommended to work with
CCELL® Cartridge
to reach best performance.

Assembly and User Guide

HOW TO USE

1. Screw the cartridge onto the battery for inserting. To avoid residues or buildup, please remove the cartridge if not in use.
2. Draw from the mouthpiece to initiate your session, during which LED indicator gradually lights up. LED light fades out as inhale stops.
3. With a 10-second inhale protection function, the battery will automatically cut off and stop working if inhale over 10 seconds.

CHARGING

1. Remove the cartridge before charging.
2. Charge the device by connecting it to the Micro-USB cable. While the device is charging, the LED light is always on.
3. It takes approximately 1 hours to fully charge the battery. When the device is fully charged, LED lights will blink 20 times and

fade out, indicating that it is time to stop charging.

4. When charging stops, LED indicator will flash 3 times.
 5. Do not leave the charging device unattended or charged overnight.
- Charging temperature: 50-113°F(10-45°C)
 - Working temperature: -14-140°F(-10-60°C)
 - Operating humidity range: 35%-70%RH
 - Storage temperature & humidity: 64-82°F (18-28°C), 35%-70%RH

WARNING

- Do not expose device to water and keep away from any flammable gases/liquids.
- Do not use in wet environments or extreme temperatures.
- Do not leave the device exposed to direct sunlight for prolonged periods of time.

- Do not allow other metal objects to contact electrical components in the battery.
- Keep device out of reach of children or pets.
- Do not drop, throw, or abuse device.
- Do not attempt to disassemble device as damage and personal injury may occur.
- M3 contains a Lithium-ion battery and should be recycled or disposed of in accordance with local requirements to avoid potential injury and/or environmental harm.
- Do not dispose of the battery or any component of M3 in a fire as it could cause an explosion or other serious injury.

NOT FOR SALE TO MINORS.

© 2021 CCELL All rights reserved.

Patent: [ccell.com/Patents](https://www.ccell.com/Patents)

Learn more at

[WWW.CCELL.COM](https://www.ccell.com)